

Efemerida asteroidului 2012 DA 14 (februarie 2013)

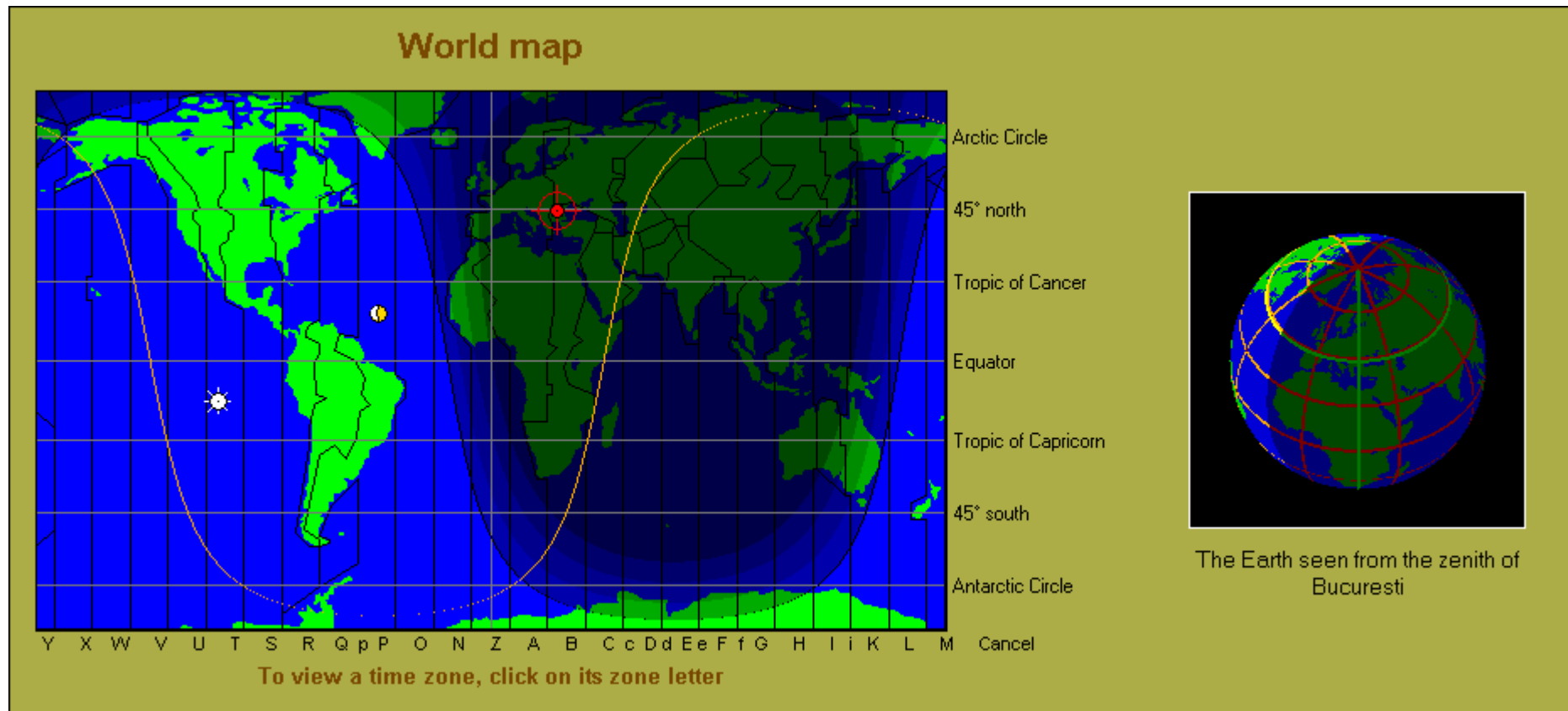
Data	UT	R	RA 2000	RA "/h	Dec 2000	Dec "/h	Mag*
	h	(UA)	h m s	"	° ' "	"	
15.02	00	0.0033	23 53 01,9	-1640,5	-75 08 01	-828,4	16.5
15.02	03	0.0029	23 46 37,0	-2454,4	-75 52 46	-1089,6	16.2
15.02	06	0.0025	23 36 45,3	-4039,1	-76 52 28	-1488,5	15.8
15.02	09	0.0020	23 19 45,0	-7738,3	-78 15 18	-2117,0	15.3
15.02	12	0.0016	22 44 13,1	-19339,6	-80 14 03	-3004,1	14.7
15.02	15	0.0011	21 00 23,6	-68431,4	-82 45 01	-1678,0	13.8
15.02	18	0.0007	16 30 48,7	-60219,3	-80 00 22	18433,3	12.5
15.02	21	0.0004	14 14 53,0	-17445,0	-51 42 48	78564,5	10.3
16.02	00	0.0004	13 31 47,1	-7310,9	16 47 56	49881,2	9.3
16.02	03	0.0007	13 12 17,4	-3932,5	45 19 03	14619,8	10.7
16.02	06	0.0012	13 01 20,0	-2443,0	54 35 34	6292,2	11.7
16.02	09	0.0016	12 54 20,8	-1662,7	58 53 44	3422,7	12.4
16.02	12	0.0020	12 49 30,6	-1204,6	61 20 44	2133,9	13.0
16.02	15	0.0025	12 45 58,0	-913,3	62 55 11	1451,9	13.4
16.02	18	0.0029	12 43 15,6	-716,6	64 00 51	1049,4	13.8
16.02	21	0.0033	12 41 07,5	-577,7	64 49 04	792,5	14.1
17.02	00	0.0038	12 39 24,0	-476,0	65 25 58	618,9	14.4

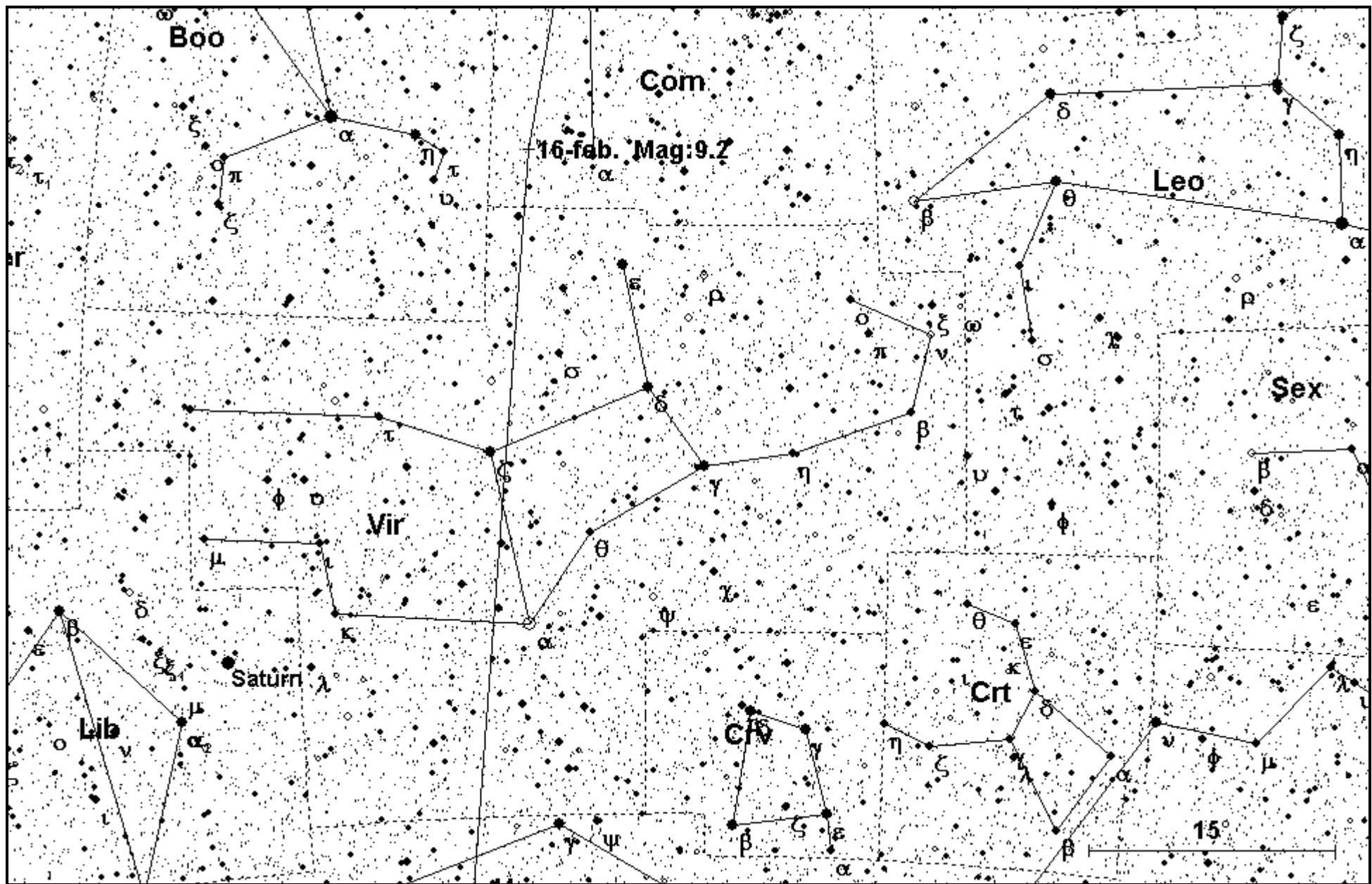
Apropierea minimă de Pământ, are loc la 15 feb. 2013, 19h25m UT.

La mometele marcate cu roșu, asteroidul nu poate fi observat datorită declinației negative.

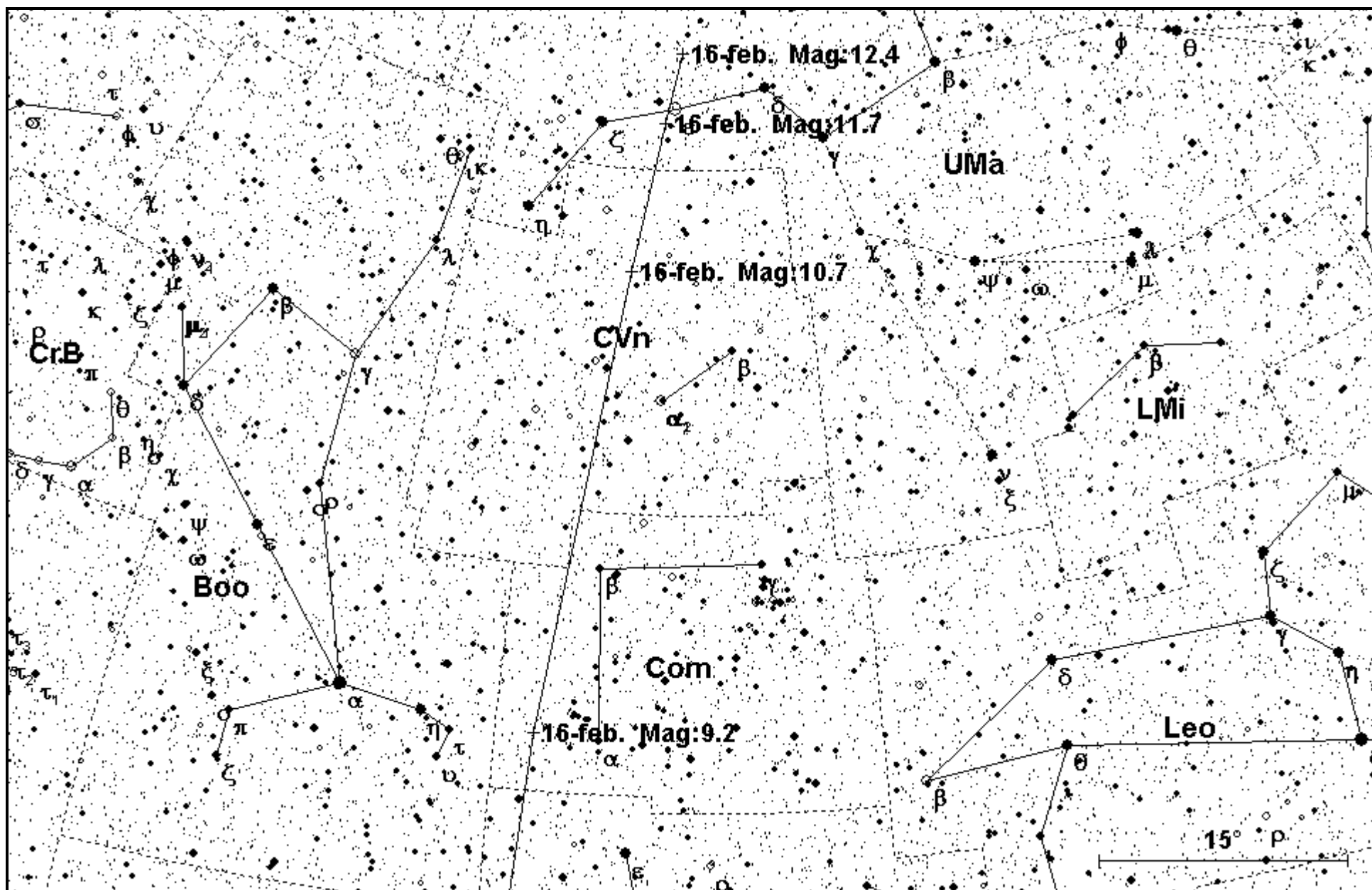
* Pentru calculul magnitudinii aparente s-au folosit valorile: H = 24,4 ; G = 0,15.

ZONA DE NOAPTE-ZI LA MOMENTUL APROPIERII MINIME





Intervalul 15 feb. 21 UT - 16 feb. 00 UT



Intervalul 16 feb. 00 UT - 16 feb. 09 UT