

# Reli-a-Flex™

## MICRO

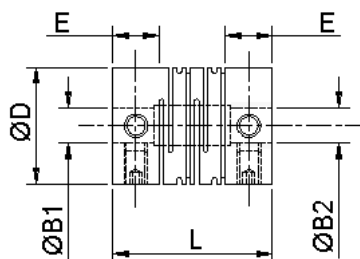
### Precision Mechanical Coupling

- General tolerances  $\pm 0.13\text{mm}$
- Material: Aluminium alloy Grade 7075-T6
- Finish: Alocrom 1000 (bores may be left unalocromed)
- Couplings are chambered as standard and fitted with metric stainless steel screws
- Max shaft intrusion when fitted is dimension E + 2mm
- Imperial bores and metric-imperial bore combinations also available

Patented - UK No. 2316735  
Pending - Int'l No. PCT/GB97/02233

Maximum Misalignments			
	Parallel mm	Angular deg	Axial mm
RCS8	0.05	2.0	+/-0.10
RCS10	0.06	2.0	+/-0.17
RCL8	0.10	2.0	+/-0.10
RCL10	0.12	2.0	+/-0.17

#### SHORT- where space becomes a consideration

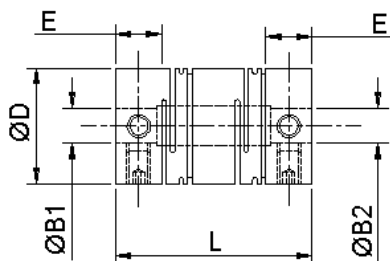


Bore Size mm	Torque Capacity			Basic Part Number	Dimensions			Technical Information			
	Non Reversing Nm	Peak Nm	Reversing Nm		O/D ØD mm	Length L mm	Hub E mm	Torsional Stiffness Nm/rad	Moment of Inertia kgm <sup>2</sup>	Mass gm	Max Speed rpm
2	0.35	0.60	0.25	RCS8	8.00	11.70	3.20	9.5	1.1E-08	1.3	40000
3	0.30	0.50	0.20					8.7	1.1E-08	1.2	
4	0.25	0.40	0.15					7.3	1.1E-08	1.0	
3	0.50	0.85	0.35	RCS10	10.00	13.65	4.00	18.3	3.3E-08	2.3	35000
4	0.45	0.75	0.30					16.8	3.3E-08	2.2	
5	0.40	0.65	0.25					14.3	3.3E-08	2.0	

Bore tolerance +0.020/-0.000mm

Torques shown are for 80% max. offset

#### LONG - for greater parallel offset



Bore Size mm	Torque Capacity			Basic Part Number	Dimensions			Technical Information			
	Non Reversing Nm	Peak Nm	Reversing Nm		O/D ØD mm	Length L mm	Hub E mm	Torsional Stiffness Nm/rad	Moment of Inertia kgm <sup>2</sup>	Mass gm	Max Speed rpm
2	0.35	0.60	0.25	RCL8	8.00	14.50	3.20	9.5	1.5E-08	1.7	24000
3	0.30	0.50	0.20					8.8	1.4E-08	1.5	
4	0.25	0.40	0.15					7.3	1.4E-08	1.4	
3	0.50	0.85	0.35	RCL10	10.00	17.00	4.00	18.7	4.3E-08	3.0	22000
4	0.45	0.75	0.30					17.2	4.2E-08	2.8	
5	0.40	0.65	0.25					14.6	4.1E-08	2.5	

Bore tolerance +0.020/-0.000mm

Torques shown are for 80% max. offset



Reli-a-Flex™ MICRO

### Coupling Engineering Application - Proposal Form

Please Fax back this form to:

**(803)396-7810**

Contact: \_\_\_\_\_ Tel: \_\_\_\_\_ Ext: \_\_\_\_\_

Position: \_\_\_\_\_ Direct (if available): \_\_\_\_\_

Company: \_\_\_\_\_ Fax: \_\_\_\_\_

Address: \_\_\_\_\_

\_\_\_\_\_

Postcode: \_\_\_\_\_

E-mail: \_\_\_\_\_ Website: \_\_\_\_\_

#### Required Operating Parameters

Outside Diameter: \_\_\_\_\_ Length: \_\_\_\_\_

Bore 1 Diameter: \_\_\_\_\_ Material: \_\_\_\_\_

Bore 2 Diameter: \_\_\_\_\_

#### Torque

Non-Reversing: \_\_\_\_\_ Reversing: \_\_\_\_\_ Peak: \_\_\_\_\_

#### Mis-alignments

Parallel: \_\_\_\_\_ Angular: \_\_\_\_\_ Axial: \_\_\_\_\_

Speed RPM: \_\_\_\_\_ Temperature: \_\_\_\_\_

#### Environmental Conditions/Consideration

Duty Cycle: \_\_\_\_\_ Required Service Life: \_\_\_\_\_

Torsional Stiffness: \_\_\_\_\_

Moment of Inertia: \_\_\_\_\_ Mass: \_\_\_\_\_

Reliance Precision Limited have been specialists in motion control for over forty years. The company also designs, manufactures and tests intricate mechanisms and assemblies for the scientific instrument, aerospace and defence industries. The engineering expertise throughout the company forms the basis for their standard product range, currently available on the website; [www.tpa-us.com](http://www.tpa-us.com)

#### How to Order

